



Tomarro Cowan, *client success specialist*

tomarroc@whirks.com

To access the new iSolved user interface, [click here](#). Use the same credentials to log in and be prepared for the two-factor authentication during your first login. You can also install it as a web app, which is pretty handy. This will eventually replace iSolved Go, so it's a good idea to familiarize yourself with it now. The following are instructions for installing the web app on your mobile device, as well:

MOBILE CHROME

Example Installing the New UI as an App on **Mobile Chrome**

The screenshot shows the iSolved login page on a mobile Chrome browser. The URL bar displays `https://mysolved.com/cloudservice`. The page content includes the iSolved logo, a 'Welcome!' message, and a login form with a 'Next' button. A red circle highlights the 'Add iSolvedHCM to Home screen' prompt at the bottom of the page. A red arrow points to the right, leading to a dialog box titled 'Add to Home screen' for 'iSolvedHCM' from 'training.mysolved.com'. The 'Add' button in this dialog is circled in red.

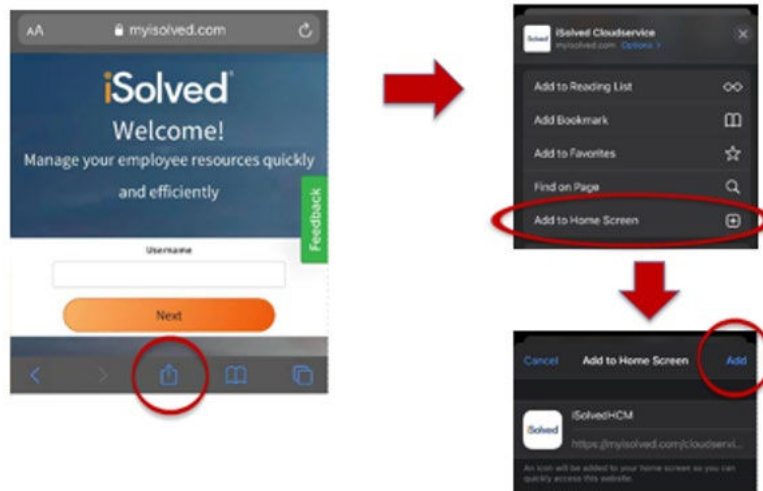
MOBILE FIREFOX

Example Installing the New UI as an App on **Mobile Firefox**

The screenshot shows the iSolved login page on a mobile Firefox browser. The URL bar displays `mysolved.com/cloudservice`. A red circle highlights the menu icon in the bottom right corner of the browser. A red arrow points to the right, leading to a context menu with options: 'Install' (circled in red), 'Save to collection', 'Desktop site', and 'Open in app'. A second red arrow points down to a dialog box titled 'Add to Home screen?' with instructions: 'Touch and hold an icon or tap Add to add it to the Home screen.' The dialog shows 'iSolvedHCM 1 x 1' and has 'Cancel' and 'Add' (circled in red) buttons.

MOBILE SAFARI

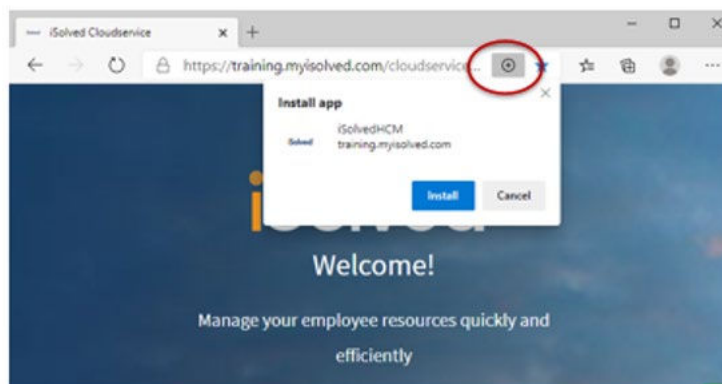
Example Installing the New UI as an App on Mobile Safari



DESKTOP MS EDGE

Example Installing the New UI as an App on Desktop MS Edge

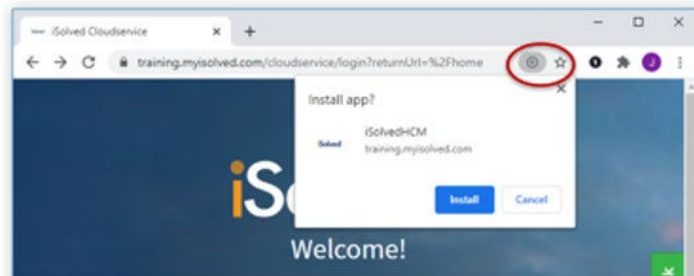
- Requires MS Edge version 8x.x.x.x or higher.
- Current version is 85.x.x.x



DESKTOP CHROME

Example Installing the New UI as an App on Desktop Chrome

- Google Chrome has supported "Add To Home Screen" for sometime however, keep Chrome up to date for the best user experience.



DESKTOP FIREFOX

Example Installing the New UI as an App on Desktop Firefox

- App Mode is normally disable in Desktop Firefox. You can use Firefox's "about:config" to change the "browser.ssb.enabled" setting from false to true.

